



Organizing Authority: St Margaret Sailing Club

Note – The Optimist Green and 420 Green fleets have a different set of sailing instructions for this event.

The notation '[DP]' denotes a rule for which the penalty is at the discretion of the Protest committee. This changes RRS 64.1.

The notation '[NP]' denotes that a breach of this rule will not be grounds for protest by a boat. This changes RRS 60.1(a). Penalties for these breaches may be less than disqualification if the Protest committee so decides.

Sailing Instructions

1 Rules

- 1.1 The regatta will be governed by the Rules as defined in *The Racing Rules of Sailing*.
- 1.2 Racing Rules will be changed as follows:
 - 1.2.1 Racing Rule 40 is changed to apply at all times while afloat without the display of code flag Y. This modifies the preamble to Part 4.
 - 1.2.2 For Optimists, Rule 61.1(a)(2) is deleted so that boats will be required to display a red flag.

2 Notices to Competitors

Notices to competitors will be posted on the official notice board outside the lower level of the SMSC Sailing Centre (the learn-to-sail building). The Race Office will be located on the upper level of the SMSC Sailing Centre.

3 Changes to the Sailing Instructions

Any change to the Sailing Instructions will be posted before 0900 hrs on the day it will take effect or 30 minutes prior to the removal of code flag AP when flown ashore (whichever is later), except that any change to the schedule of races will be posted by 2000 hrs on the day before it will take effect.

4 Signals Made Ashore

- 4.1 Signals made ashore will be displayed on the flag staff on the water side of the St Margaret Sailing Club main clubhouse.
- 4.2 Signals made ashore over a course flag only apply to that course.

- 4.3 When code flag AP is displayed ashore, '1 minute' is replaced with 'not less than 60 minutes' in race signal AP. This changes race signal AP.
- 4.4 Code flag D with one sound signal means: 'The warning signal will be made not less than 60 minutes after code flag D is displayed'. Boats shall not launch until this signal is made. (NP)







5 Schedule

Friday July 20	0900	Coaches' meeting, Laser, Radial and 4.7
	0930	Competitors' meeting, Laser, Radial and 4.7
	1100	First warning signal, Laser, Radial and 4.7
Saturday July 21	0900	Coaches' meeting
	0930	Competitors' meeting, 29er, C420, I420 and Optimist
	1100	First warning signal, all classes Regatta dinner after racing
Sunday July 21	0900	Coaches' meeting
	1100	First warning signal, all classes
	1430	Latest warning signal all classes
	1630	Approximate awards time

- 5.1 After a long postponement, and before the second and subsequent start of each day, to alert boats that a race or sequence of races will begin soon, the orange flag defining the start line will be displayed, with one sound at least five minutes before a warning signal is displayed.

6 Class Flags

Class flags shall be:

Class	Racing Area	Class Flag
Laser	Alpha	 Red Laser symbol on White
Laser Radial	Alpha	 White Laser symbol on Red
Laser 4.7	Alpha	 Solid Pink with no symbol
International 420	Alpha	 Solid Purple with no symbol
Club 420	Bravo	 Blue 420 symbol on White
Optimist	Bravo	 Blue Optimist symbol on White
29er	Bravo	<i>29er</i> Red 29er symbol on White

7 Racing Areas

There will be three racing areas designated as Alpha, Bravo and Charlie as shown in Addendum A. Classes will be allocated to racing areas in accordance with Instruction 6.

8 The Courses

The diagrams in Addendum B and Addendum C show the courses, the order in which marks are to be passed, and the side on which each mark is to be left.

9 Marks

- 9.1 Marks 1, 2, 3, 4 and 5 will be orange inflatable tetrahedrons.
- 9.2 The starting marks will be:
 - 9.2.1 The race committee signal boat at the starboard end displaying an orange flag and
 - 9.2.2 An inflatable buoy or a race committee boat displaying an orange flag at the port end.
- 9.3 The finishing marks will be:
 - 9.3.1 A race committee boat displaying an orange flag and
 - 9.3.2 An inflatable buoy.
- 9.4 New marks, as described in Instruction 11.1 will be orange inflatable tetrahedrons with a black band.
- 9.5 A Race Committee boat signalling a change to the next leg of the course is a mark as provided in Instruction 11.2.

10 The Start

- 10.1 The starting line will be between the staff displaying the orange flag on the Race Committee signal boat at the starboard end and either the staff displaying the orange flag on the Race Committee boat or the course side of an inflatable mark at the port-end.
- 10.2 A boat starting later than 4 minutes after her starting signal will be scored Did Not Start. This changes rules 63.1, A4 and A5.

11 Change of the Next Leg of the Course

- 11.1 To change the next leg of the course the Race Committee will lay a new mark (or move the finishing line) and remove the original mark as soon as practicable. When in a subsequent change a new mark is replaced, it will be replaced by an original mark. Any mark to be rounded after the new mark may be moved to maintain the course configuration without signalling.
- 11.2 Except at a gate, boats shall pass between the Race Committee boat signalling the change of the next leg and the nearby mark, leaving the mark to port and the Race Committee boat to starboard. This changes rule 28.

12 The Finish

- 12.1 The finishing line will be between a staff displaying an orange flag on a Race Committee Boat and the course side of the finishing mark (in accordance with course diagrams).

13 Penalty System

- 13.1 For the 29er class Rules 44.1 and P2.1 are changed so that the two-turn penalty is replaced by the one-turn penalty.
- 13.2 Appendix P is in effect except that Rule P2.3 is deleted and rule P2.2 is changed so that it will apply to any penalty after the first.

14 Whistle System

- 14.1 In addition to their role under Appendix P, jury members may blow a whistle when they observe a breach of a rule of Part 2. No sail number will be hailed. If no penalty turns are done the jury may protest one or more boats.

14.2 Action or non-action by the Protest Committee under Instruction 14.1 shall not be grounds for redress.

15 Time Limits and Target Times

15.1 Time limits and target times are as follows:

Class	First Mark Time Limit	Time Limit	Target Time
Optimist	15 minutes	50 minutes	35 minutes
Laser, Radial, 4.7, I420 and C420	20 minutes	60 minutes	40 minutes
29er	15 minutes	50 minutes	30 minutes

15.2 If no boat has passed the first mark within the first mark time limit the race will be abandoned.

15.3 Failure to meet the target time will not be grounds for redress. This changes Rule 62.1(a).

15.4 Any boat finishing more than 20 minutes after the first boat shall be scored Did Not Finish without a hearing. This changes RRS 35, A4 and A5.

15.5 When it is in the best interests of the fleet and its competitors, the Race Committee may award finishing points to boats which are delaying the finish of the race (on course finish). The scoring abbreviation for an on course finish will be OCF. This changes rules 28.1, 35, A4 and A11.

16 Protests and Requests for Redress

16.1 Protest forms are available at the Protest Desk in the SMSC Sailing Centre. Protests must be filed with the Protest Committee secretary at the protest desk.

16.2 The protest time limit for each class is 60 minutes after their respective committee boat finishes the last competitor. The Committee boat will radio in the finish time to the Jury Desk.

16.3 Protest notices will be posted on the official notice board within 30 minutes of the end of protest time to inform competitors where and when there is a hearing to which they are parties to a protest or named as witnesses. Protests will be heard as quickly as possible and in the approximate order of receipt.

16.4 Notices of protests by the Race Committee or Protest Committee will be posted to inform boats under Rule 61.1(b).

16.5 A list of boats that have been penalized for breaking Rule 42 will be posted.

16.6 On the last scheduled day of racing a request for redress based on a protest committee decision shall be delivered no later than 30 minutes after the decision was posted. This changes Rule 62.2.

17 Scoring

17.1 One race is required to be completed to constitute a series.

17.2 Laser, Laser Radial, Laser 4.7, I420 and C420 classes: when fewer than 6 races have been completed, a boat's series score will be the total of her race scores. When 6 or more races have been completed, a boat's series score will be the total of her race scored excluding her worst score.

17.3 Optimist class: when fewer than 5 races have been completed, a boat's series score will be the total of her race scores. When 5 or more races have been completed, a boat's series score will be the total of her race scored excluding her worst score.

17.4 29er class: when fewer than 6 races have been completed, a boat's series score will be the total of her race scores. When 6 or more races have been completed, a boat's series score will be the total of her race scores excluding her worst score.

17.5 The Laser, Radial, Laser 4.7, I420, C420 and 29er class will sail a maximum of 12 races. The Optimist class will sail a maximum of 10 races.

18 Safety Regulations (NP)

- 18.1 All boats shall be kept at SMSC.
- 18.2 When leaving the harbour and again when returning, competitors shall sail through a gate formed by a buoy and the end of the breakwater so that the 'seagulls' can record the sail numbers of boats departing and returning to harbour. If boats are being towed, they must be towed through the gate and must hail their sail numbers, if their sails are not hoisted.
- 18.3 All boats shall check in with their Signal Boat upon arriving at the course by sailing past the stern of the boat on starboard tack and hailing their sail number.
- 18.4 A boat that retires from a race shall notify the Race Committee as soon as possible or the Race Office immediately after returning to the shore.
- 18.5 Lasers, Radials and 29ers shall have a minimum 10m x 7mm diameter painter (tow line) attached to their mast when on the water. Lasers, Radials and 29ers shall not use their mainsheets as tow lines. Club 420s and Optimists must have painters (tow lines) in accordance with their class rules. Optimist towlines shall have fixed loops at their outer ends to allow 'daisy-chain' towing.
- 18.6 A whistle shall be attached by a lanyard to each competitors PFD. The lanyard shall be long enough to permit the sailor to use the whistle while wearing the PFD.
- 18.7 Competitors who require assistance should wave one arm with an open hand. If no assistance is required, the arm should be waved with a closed fist.
- 18.8 If considered necessary by a safety official, a competitor may be required by a race organization boat to abandon their boat and board the support boat.
- 18.9 In fog, a code flag L may be displayed at the finish line. This means stay close by the finish and wait to be escorted to the harbour by a patrol boat.

19 Official Boats

- 19.1 Race Committee Signal boats will be identified by a Race Committee Flag.
- 19.2 Race Committee Mark and Safety boats will not carry specific identification.
- 19.3 Jury boats will display a white flag with a black letter J.
- 19.4 Failure of a Race Committee boat to fly an identification flag is not grounds for redress. This changes Rule 60.1(b).

20 Support Boats (NP)

- 20.1 All support boats shall register with the Organizing Authority by completing the Support Boat Registration form and shall carry identification as supplied by the Organizing Authority.
- 20.2 Registered support boats will be allowed to launch and will be assigned a berth or mooring at SMSC for the duration of the regatta. Such a berth or mooring is subject to the terms and conditions of all boats using club controlled facilities.
- 20.3 Support boats shall stay outside the racing area from the warning signal of the first fleet to start until all boats have finished or all races have been postponed or abandoned. The racing area is defined as 50 metres to leeward of the start line and 100 meters outside all lay lines.
- 20.4 Failure of a support boat to register, or abide by Instructions 20.2 or 20.3 may result in action by the protest committee under rule 64.4.
- 20.5 Support boats are requested to monitor the Race Committee working channel. The Race Committee, in support of safety operations, may lift the restrictions of 20.3. It is recognized that coaches are essential to the safety plan of the regatta and they are required to assist in providing safety cover to competitors on the water. The Race Committee working channels will be:

Course	Channel
Alpha	71
Bravo	72
Charlie	69

21 Radio Communication (NP)

Except in an emergency, a boat shall neither make radio transmissions while racing nor receive radio communications not available to all boats. This restriction also applies to mobile phones and other devices capable of receiving email, text or other electronic forms of communication.

22 Advertising (NP)

Boats may be required to display advertising chosen and supplied by the Organizing Authority in accordance with World Sailing Regulation 20.

23 Right to use Name and Likeness

In participating in an event, a competitor automatically grants to the Organizing Authority and the sponsors of the event, the right in perpetuity, to make, use and show, from time to time and at their discretion, any motion pictures, still pictures and live, taped or filmed television and other reproductions of him/her during the period of the competition in these events event in which the competitor participates and in all material related to the events without compensation.

24 Disclaimer of Liability

24.1 Competitors participate in the regatta entirely at their own risk. See Rule 4, Decision to Race.

24.2 The St. Margaret Sailing Club and all other individuals and entities involved in the organization of this regatta shall accept no liability whatsoever for any injury, damage or loss or claim, whether personal or material, incurred or inflicted to participants before, during or after this regatta.

25 Trash Disposal (NP)

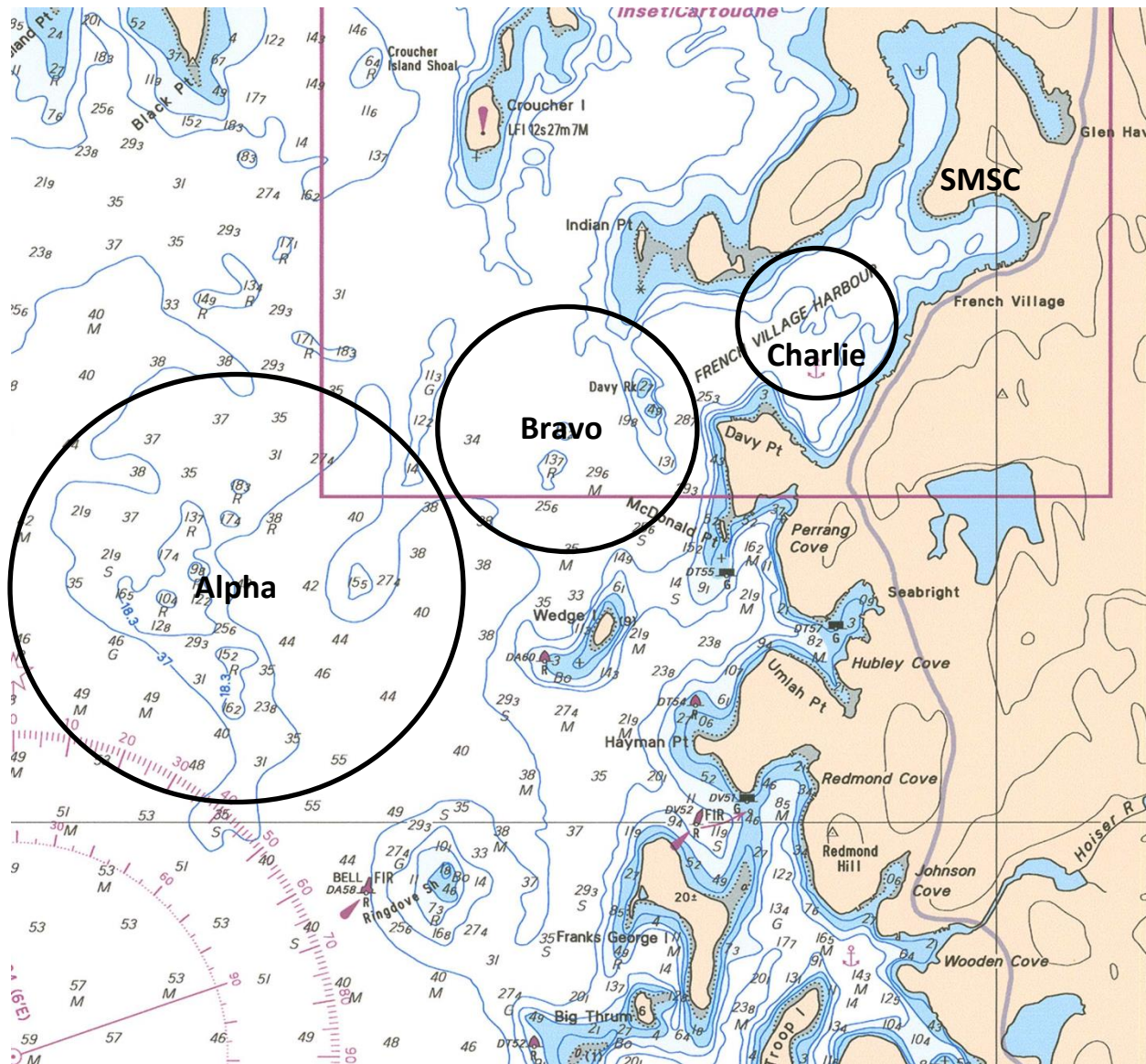
Coach boats, Race Committee boats, Jury boats, Safety boats and support boats will accept trash.

26 CODE OF CONDUCT (NP)

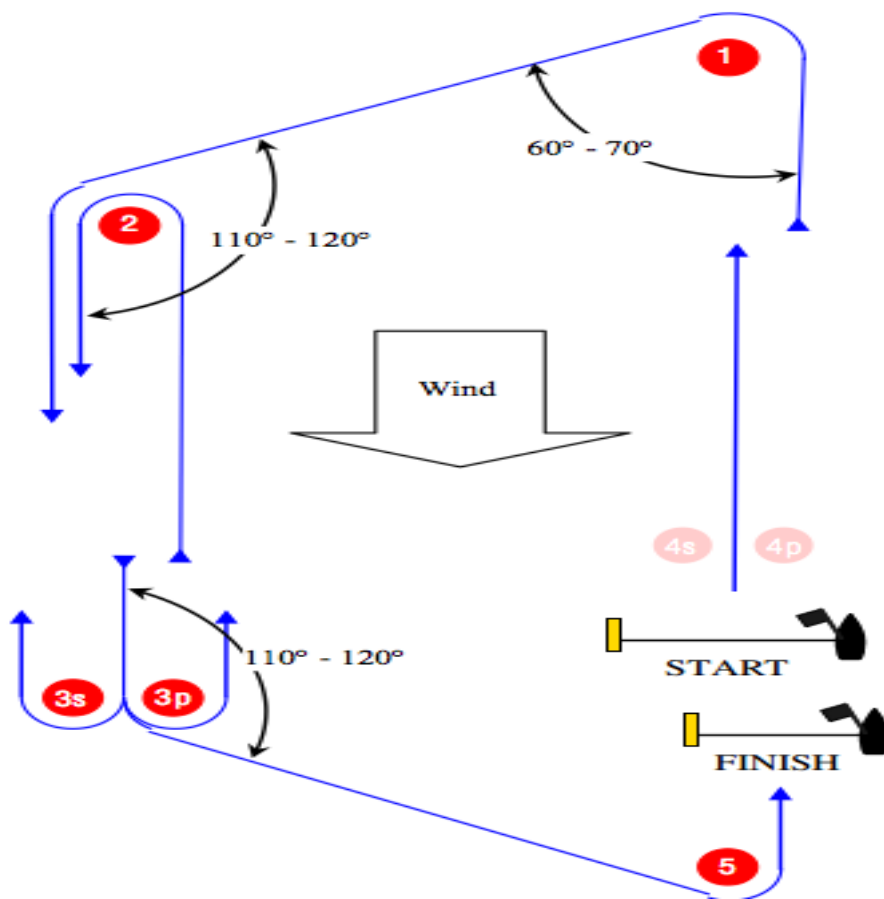
Competitors, coaches and team leaders shall comply with any reasonable request from a regatta official.

Addendum A – Racing Areas

(Not for Navigation)



Addendum B – Alpha Courses



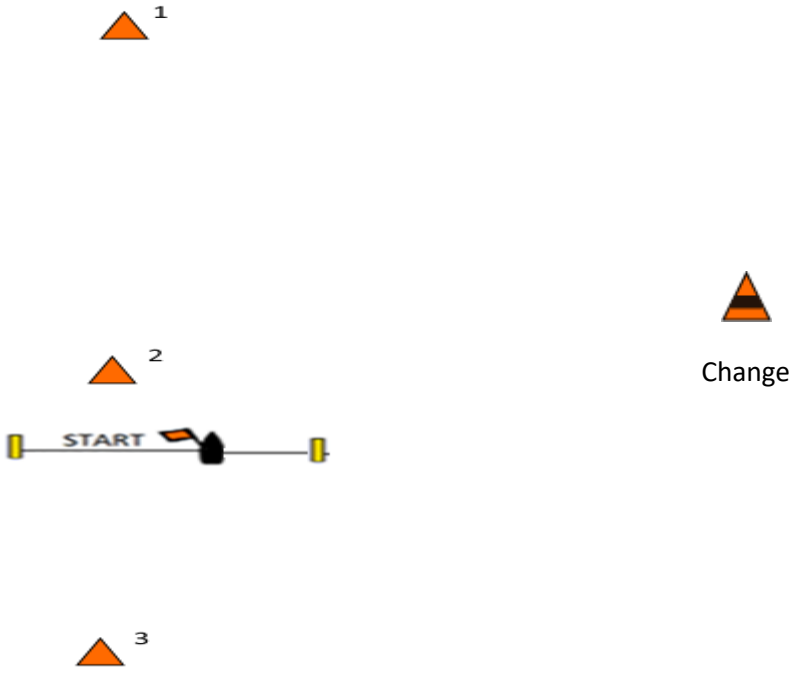
Course: Inside Trapezoid

I2	Start – 1 – 4S/4P – 1 – 2 – 3P – 5 - Finish
I3	Start – 1 – 4S/4P – 1 – 4S/4P – 1 – 2 -3P – 5 - Finish

Course: Outside Trapezoid

O2	Start – 1 – 2 – 3S/3P – 2 – 3P – 5 - Finish
O3	Start – 1 – 2 – 3S/3P – 2 – 3S/3P – 2 – 3P – 5 - Finish

Addendum C – Bravo Courses



L1	START – 1 – 2 – 1 FINISH
L2	START – 1 – 3 – 1 FINISH
Marks to be left to port	