



SMAKR 2018

St. Margaret's Annual Keelboat Regatta
August 11th - 12th, 2018

SAILING INSTRUCTIONS

1 RULES

1.1 The regatta will be governed by the rules as defined in *The Racing Rules of Sailing*.

1.2 Rules of PHRF-NS will apply.

2 NOTICES TO COMPETITORS

Notices to competitors will be posted on the official notice board located at the main entrance to the SMSC clubhouse.

3 CHANGES TO SAILING INSTRUCTIONS

Any change to the sailing instructions will be posted before 1030hrs on the day it will take effect, except that any change to the schedule of races will be posted by 2000hrs on the day before it will take effect.

4 SIGNALS MADE ASHORE

4.1 Signals made ashore will be displayed on the flagpole on the South side of the SMSC Clubhouse. When a signal is displayed over a fleet flag it applies to that fleet only.

4.2 When flag AP is displayed ashore, '1 minute' is replaced with 'not less than 60 minutes' in the race signal AP.

5 SCHEDULE OF RACES

5.1 Dates of racing for all classes: Saturday, August 11th and Sunday, August 12th, 2018

5.2 Number of races:

	<i>Total number</i>	<i>Races per day</i>
All Handicap Classes	up to 4	up to 2

5.3 The scheduled time of the warning signal for the first race on both Saturday, August 11th and Sunday, August 12th will be 1200hrs.

5.4 When there has been a long postponement and when more than one race will be held on the same day, the warning signal for the first race and each succeeding race will be made as soon as practicable.

5.5 On the last day of the regatta no warning signal will be made after 1430hrs.

6 CLASS FLAGS AND RATING BANDS

6.1 Class flags will be:

<i>Class</i>	<i>Flag</i>
PHRF-NS A	Code Flag A
PHRF-NS B	Code Flag B
PHRF-NS C	Code Flag C

6.2 Final rating bands and class scratch lists will be posted on the official notice board on Saturday, August 11th by 1030hrs.

7 RACING AREAS

7.1 The racing area will be located in the waters of St. Margaret's Bay. Please refer to the SMSC Senior Fleet Racing Chart available at the registration desk and to notifications made at the Skippers' Meeting regarding which racing area will be used for the course on each day.

8 THE COURSES

8.1 If the Race Committee intends to run a 'Windward-Leeward' style course, the signal vessel shall fly code flag whiskey off of her starboard quarter. The Race Committee signal vessel will fly numeral pennant 1, 2 or 3 below code flag whiskey to indicate which course will be used as described in Attachment A.

8.2 For 'Round-the-Buoys' style courses, prior to the warning signal, the Race Committee will display the order in which marks are to be passed and the side to which they are to be rounded on a white board hanging from the starboard hand side of the signal vessel. As a courtesy to competitors, this course will also be announced by VHF on Ch71.

9 MARKS

9.1 Marks may be navigational aids, fixed club marks or laid inflatable orange or yellow tetrahedrons.

10 THE START

10.1 Races will be started by using rule 26 with the warning signal given 5 minutes before the starting signal.

10.2 The starting line will be between a staff displaying an orange flag on the signal vessel and the course side of either a nearby club mark or a yellow inflatable cylindrical pin laid off the port side of the Race Committee signal vessel.

10.3 Boats whose warning signal has not been made shall avoid the starting area. The starting area is defined as a 75-metre radius from any point on the starting line.

10.4 A boat starting later than 4 minutes after her starting signal will be scored Did Not Start. This changes rule A4.

11 CHANGE OF THE NEXT LEG OF THE COURSE

11.1 To change the next leg of the course for a 'Windward-Leeward' style course, the race committee will announce the change over the radio.

11.2 To change the course for 'round-the-buoys' races, the race committee will announce the change over the radio. This changes rule 33 by deleting rule 33(a)(1), (2) and 33(b), and replacing rule 33(a) with an announcement over the radio.

12 THE FINISH

The finishing line will be between a staff or mast displaying an orange flag displayed on the signal vessel and the course side of a yellow inflatable cylindrical pin laid off of the starboard bow of the committee vessel.

13 TIME LIMITS AND TARGET TIMES

13.1 Time limits are as follows:

<i>Class</i>	<i>Time limit</i>
All Classes	3.5 hrs

13.2 When a "Windward-Leeward" style course is being sailed, the race will be abandoned if no boats pass mark 1 within 45 minutes.

13.3 For all classes, boats failing to finish within 45 minutes after the first boat in their class sails the course and finishes will be scored Did Not Finish. This changes rules 35, A4 and A5.

14 PROTESTS AND REQUESTS FOR REDRESS

14.1 Protest forms are available from the SMSC Clubhouse bar. Protests shall be delivered there within the protest time limit.

14.2 The protest time limit is one (1) hour after the signal boat has docked. This time will be posted on the official notice board.

14.3 Notices will be posted within 15 minutes of the protest time limit to inform competitors of hearings in which they are parties or named as witnesses. Hearings will be held in the jury room, the location of which will be posted on the official notice board, beginning at the time posted.

14.5 Breaches of instructions 10.3 and 16 will not be grounds for a protest by a boat. This changes rule 60.1(a).

14.6 Penalties for breaking a rule other than those of Part 2 or Rule 31 will be determined by the protest committee. Penalties may be less than disqualification if the protest committee so decides. The scoring abbreviation for a discretionary penalty imposed under this instruction will be DPI.

14.7 On the last day of the regatta a request for redress from a protest committee decision shall be delivered no later than 30 minutes after the decision was posted. This changes rule 62.2.

15 SCORING

15.1 One (1) race is required to be completed to constitute a series.

15.2 All races will count in handicap classes.

16 SAFETY REGULATIONS

16.1 Check-in: boats in all classes are required to check in with the race committee prior to the warning signal of their first race each day. Boats shall either sail past the stern of the signal vessel on a starboard tack and hail the Race Committee or hail the Race Committee on VHF Channel 71 using the following call-in: "Race Committee, Race Committee, this is (Boat Name), Sail Number (sail number), with (number of persons) aboard, checking in."

16.2 A boat that retires from a race shall notify the Race Committee as soon as possible either by hailing the committee on VHF Ch. 71 or by sailing past the signal vessel and hailing that she has retired. [DP]

17 RADIO COMMUNICATION

17.1 The Race Committee intends to make general broadcasts to all competitors via VHF Ch.71. Failure to receive transmissions shall not be grounds for redress.

17.2 A boat shall neither make radio transmissions while racing nor receive radio communications not available to all boats. This restriction also applies to mobile telephones.

18 PRIZES

Prizes will be awarded to the top three (3) finishers in each class. Further prizes may be awarded at the discretion of the Organizing Authority.

19 DISCLAIMER OF LIABILITY

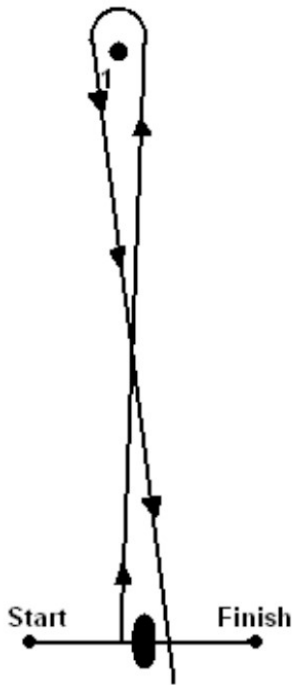
Competitors participate in the regatta entirely at their own risk. See rule 4, Decision to Race. The organizing authority will not accept any liability for material damage or personal injury or death sustained in conjunction with or prior to, during, or after the regatta.

20 INSURANCE

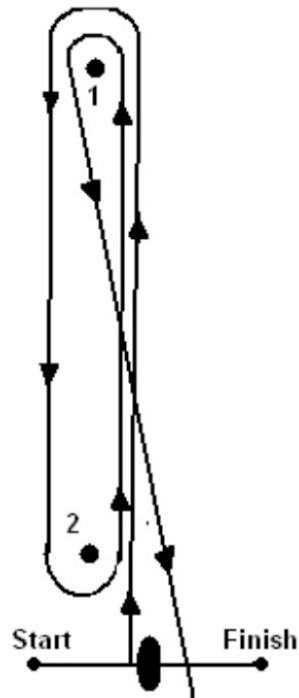
Each participating boat shall be insured with valid third-party liability insurance with a minimum cover of \$1,000,000 per event or the equivalent.

APPENDIX A – 'WINDWARD-LEEWARD' STYLE COURSES

COURSE #1
Numeral Pennant 1
Start-1-Fin



COURSE #2
Numeral Pennant 2
Start-1-2-1-Fin



COURSE #3
Numeral Pennant 3
Start-1-2-1-2-1-Fin

